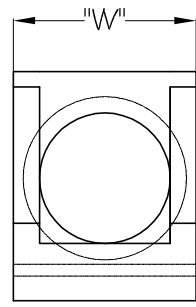


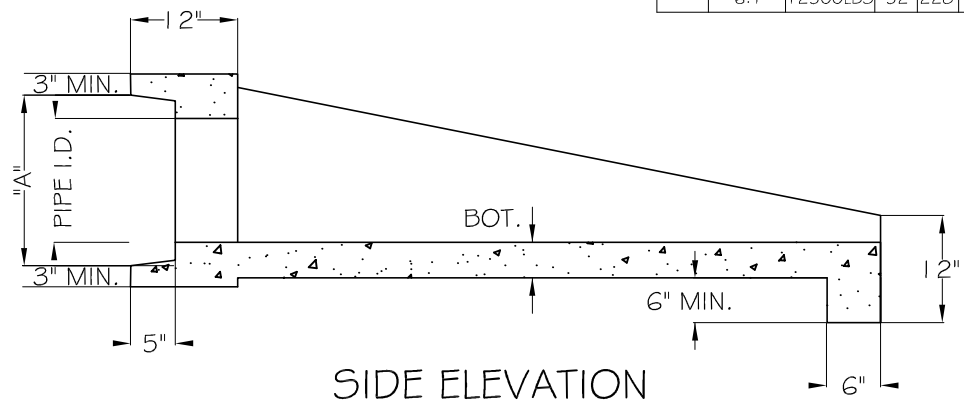
ISOMETRIC VIEW

REAR ELEVATION



SPECIFICATION CHART:

PIPE I.D.	SLOPE	WEIGHT	W	L	WALL	BOT.	A
12"	6:1	2327LBS	26"	84"	5"	5"	18"
15"	4:1	2050LBS	26"	60"	5"	5"	20 1/2"
	6:1	2605LBS	26"	84"	5"	5"	20 1/2"
18"	3:1	1750LBS	30"	55"	5"	5"	24"
	4:1	2050LBS	30"	68"	5"	5"	24"
	6:1	2800LBS	30"	98"	5"	5"	24"
24"	3:1	3125LBS	35"	81"	5"	5"	31"
	4:1	3850LBS	35"	104"	5"	5"	31"
	6:1	4975LBS	35"	150"	5"	5"	31"
30"	3:1	5225LBS	46"	97"	6"	6"	38 1/2"
	4:1	6500LBS	46"	125"	6"	6"	38 1/2"
	6:1	9200LBS	46"	186"	6"	6"	38 1/2"
36"	3:1	7000LBS	52"	119"	6"	6"	46"
	4:1	8850LBS	52"	154"	6"	6"	46"
	6:1	12500LBS	52"	228"	6"	6"	46"



SIDE ELEVATION

SPECIFICATIONS:

1. CONCRETE: HAS A DESIGN STRENGTH OF 5,000 PSI AT 28 DAYS
2. STEEL REINFORCEMENT: ASTM A-615 GRADE 60 OR ASTM A-497 WELDED WIRE FABRIC
3. LOADING: DESIGNED FOR H2O LOADING
4. C.I. CASTINGS: ASTM A48, CLASS 30/35.

The Turner Co.

DRAWN BY: DJH	JOB NO:	DATE: 7/1/2010
CUSTOMER & PRODUCT		JOB NAME
SAFETY END TREATMENT		